

Home / Sulliew / LIBERTY ES

2017 - 2018

# LIBERTY ES

PK - 02 Grades

OVERVIEW INDICATORS ▾ ABOUT OUR SCHOOL YOUR STUDENT

## PRINCIPAL

TONI JASNA

## ENROLLMENT

559 (2018)

## PHONE

(918) 775-4741

## WEBSITE

[WWW.SDE.OK.GOV](http://WWW.SDE.OK.GOV)

## PROGRAMS OF EXCELLENCE

Beginning next year, Programs of Excellence will celebrate schools working to ensure students receive a well-rounded education in a safe and healthy environment. Schools identified as Programs of Excellence at one of three levels – bronze, silver or gold – will be distinguished for their evidence-based practices and support structures. [Click here](#) to learn more about how your school can foster Programs of Excellence.



Fine Arts



Mathematics



Science



Social Studies and Civics



World Languages



Safe and Healthy Schools

## RELATED PROGRAMS

Academic Team

Agriculture

Business

Computer Science

Fine Arts

Half/Full Day Pre-K

STEM

World Languages

⊙ indicates available program

## INDICATORS

### ACADEMIC ACHIEVEMENT

How prepared are students for the next grade, course or level?

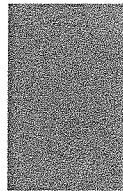
Points Possible: 0



NA

SCHOOL

52%



STATE

### ACADEMIC GROWTH

How are students growing compared to their performance the previous year?

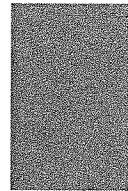
Points Possible: 0



NA

SCHOOL

50%



STATE

### ENGLISH LANGUAGE PROFICIENCY PROGRESS

D

How well are English learners meeting their language-acquisition targets?

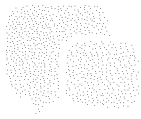
Points Possible: 15

### CHRONIC ABSENTEEISM

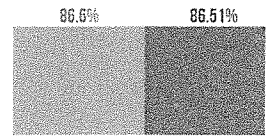
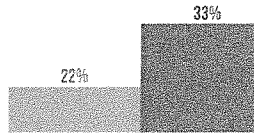
C

What percentage of students is in good attendance?

Points Possible: 10

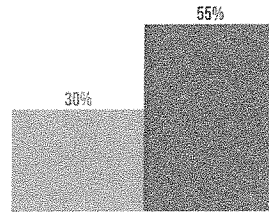
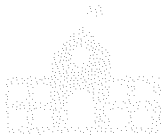


### LIBERTY ES Parent Card



### OVERALL GRADE

How did the school perform overall?  
Points Possible: 25



NO GRADE

SCHOOL

STATE

### LIBERTY ES



136 South Dogwood Street  
Sallisaw, OK 74955  
United States



SCHOOLS

DISTRICTS

STATE

